

# DRIVING 101

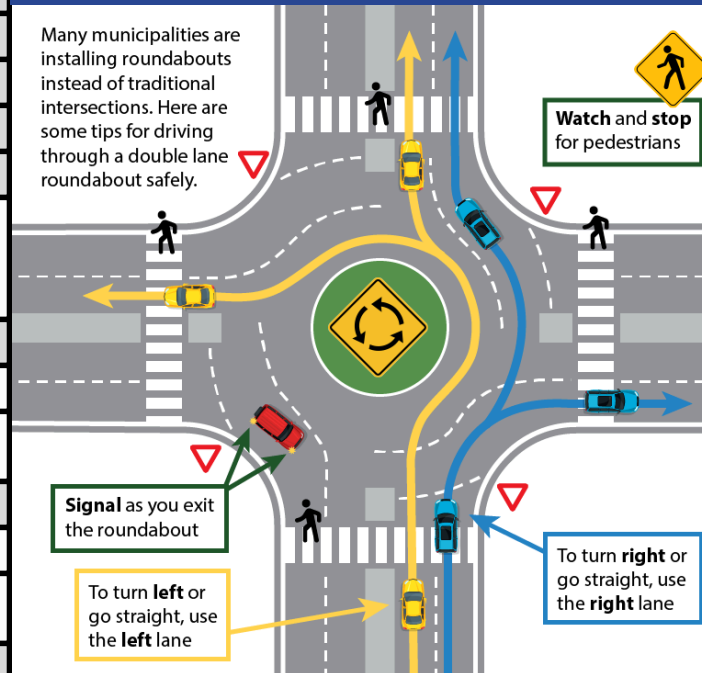
## Drive 1: AT HOME PRACTICE SHEET



CENTER THE WHEEL
SPEED CONTROL
LANE POSITIONS
REFERENCE POINTS
SMB = SIGNAL, MIRROR, BLINDSPOT
STOPPING
<ul style="list-style-type: none"> <li>SL= STOP LINE</li> <li>CW= CROSSWALK</li> <li>SW= SIDEWALK</li> <li>2 STOPS BLIND</li> </ul>
LEFT TURNS
SMB=SIGNAL,MIRROR,BLINDSPOT, INTERSECTION
<ul style="list-style-type: none"> <li>SLOW BEFORE TURN</li> <li>SNUG TO CENTER LINE</li> </ul>
RIGHT TURNS
SMB=SIGNAL,MIRROR, BLINDSPOT, INTERSECTION
<ul style="list-style-type: none"> <li>SLOW BEFORE TURN</li> <li>SNUG TO CURB</li> </ul>
BACKING AROUND A CORNER SMB
<ul style="list-style-type: none"> <li>STRAIGHT</li> <li>LOOKING VIS</li> <li>AROUND CORNER</li> <li>RIGHT OF WAY</li> </ul>
INTERSECTIONS/ CURVES (SLOW BEFORE)
<ul style="list-style-type: none"> <li>SCANNING L/CRL = left, center, right, left</li> <li>COVER BRAKE</li> </ul>
LANE CHANGE
<ul style="list-style-type: none"> <li>SMB=SIGNAL, MIRROR, BLINDSPOT</li> <li>SPEED CONTROL</li> <li>LANE CHANGE TO CURB</li> </ul>
COUNTRY ROADS
<ul style="list-style-type: none"> <li>TURNING / CURVES</li> <li>LANE POSITIONING</li> </ul>
FREEWAY (OPTIONAL)
<ul style="list-style-type: none"> <li>ENTERING / EXITING</li> <li>FOLLOWING DISTANCE / MIRROR</li> </ul>

### ROUNDBABOUTS

Many municipalities are installing roundabouts instead of traditional intersections. Here are some tips for driving through a double lane roundabout safely.



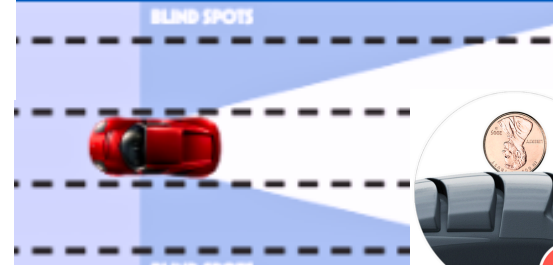
### REFERENCE POINTS



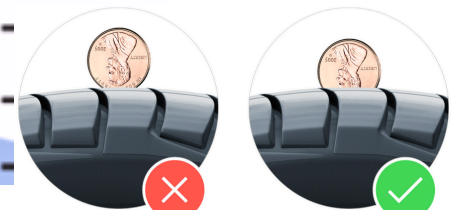
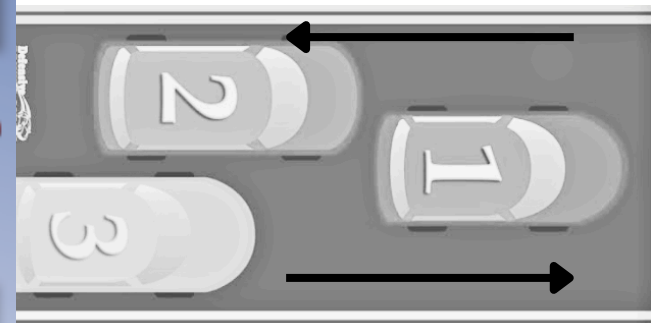
### ARM SIGNALS



### BLINDSPOTS



### WHERE TO STOP



GET 10 HOURS OF PRACTICE BETWEEN EACH DRIVE

# DRIVING 101

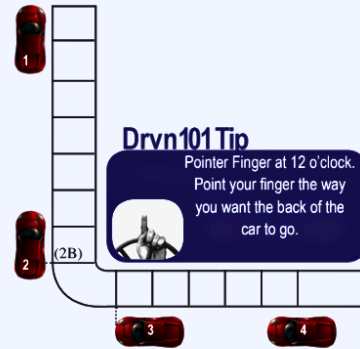
## Drive 2 & 5: AT HOME PRACTICE SHEET

GET 10 HOURS OF PRACTICE BETWEEN EACH DRIVE



BASIC CONTROLS: (2 STOP)	
<ul style="list-style-type: none"> <li>• STOPPING: SL, CW, SW</li> <li>• SPEED CONTROL</li> </ul>	
TURNS: RIGHT & LEFT SMB	
<ul style="list-style-type: none"> <li>• RIGHT: SIG, MIR, BS</li> <li>• LEFT: SIG, MIR, BS</li> </ul>	
LANE CHANGE: SPEED CONTROL SMB	
INTERSECTIONS	
<ul style="list-style-type: none"> <li>• UNCONTROLLED</li> <li>• CONTROLLED</li> </ul>	
BACKING AROUND A CORNER SMB	
<ul style="list-style-type: none"> <li>• STRAIGHT</li> <li>• LOOKING VIS</li> <li>• AROUND CORNER</li> <li>• RIGHT OF WAY</li> </ul>	
PARKING	
UPHILL	ENTERING: SMB, WHLS, CRB
AWAY	EXITING SIG, MIR, BS
DOWNHILL	ENTERING: SMB, WHLS, CRB
TOWARDS	EXITING: SIG, MIR, BS
ANGLE	ENTERING: SMB
	EXITING: SMB
PERPENDICULAR	ENTERING: SMB
	EXITING: SMB
PARALLEL	ENTERING: SMB <ul style="list-style-type: none"> <li>• BACKING</li> <li>• CENTERING</li> <li>• EXITING: SMB</li> </ul> HAND SIGNALS

## BACKING AROUND A CORNER



## STEP 2

One full turn to the right, turn on your right turn signal, and blind spot check to make sure it is clear of vehicles and pedestrians. When clear, start to come around the corner.

### STEP 3

As soon as your car comes around the corner and you are straight with the curb, stop, turn the steering wheel back one full turn to the left to straighten the wheels.

## STEP 4

Continue backing until both tires are within 12" of the curb. Stop.

## STEP 1

Signal and check blind spots. Pull over to the curb. Be within 12" of the curb. Finger at 12 o'clock. Reverse until your back tire lines up to the last crack in the curb (2B), and come to a full stop.

## PARALLEL PARKING

## STEP 1



- Signal and blind spot check, pull along side the lead vehicle
- Line up their back bumper to the middle of your tire/back seat
- Stop.

## STEP 2



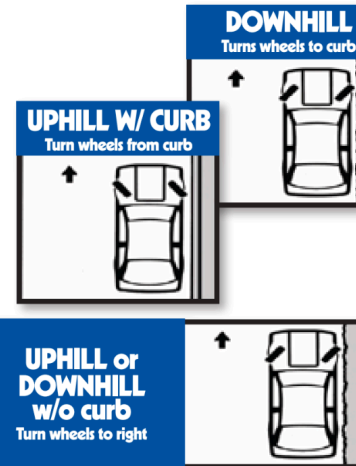
- Turn wheel all the way to the right.
- Come back until their back bumper lines up with the front right corner of your bumper.
- Stop.

### STEP 3

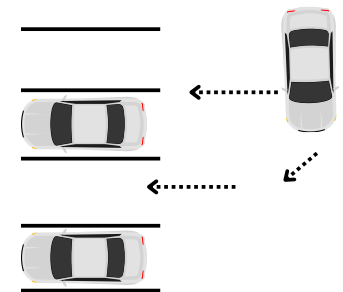


- Turn wheel all the way to the left.
  - Come back until you are straight and within 12 inches of the curb.
- NOTE: When returning to the street, use your signal, blind spot, look, and arm signal.

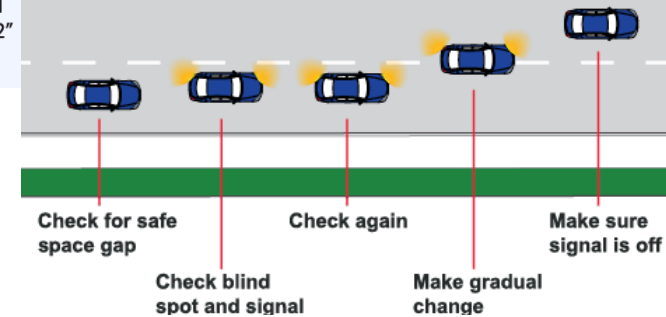
## HILL PARKING



## PERPENDICULAR PARKING



## CHANGING LANES SAFELY



## ANGLE PARKING



SIG= signal, WHLS= wheels, CRB= Curb, BS= Blindspot SMB= signal, mirror, blindspot MIR= mirror, SL= stop line, SW= sidewalk, CW= crosswalk